

Introduction

February 2019

About

At ScaleCast we want to provide the best real stone products that go far beyond levels of detail, but also provide an easy and effective product set that help you achieve beautiful scenery that looks as real as possible

Country House

Overview

Building plans for real stone buildings from www.scalecast.co.uk



Main View



Our kits provide all the parts needed to make several different buildings and you can extend the designs by adding lots of new add on elements and variations, so as we work through the instructions that follow always keep in mind that nothing here is set in stone, you can replace many parts from our full range available

So, let's get planning and building

Casting

For casting we have several videos and instruction documents on our website, so will not cover this in any depth here.

Casting in plaster can be a little more of a challenge but in our opinion provide that real stone look and feel and we think is much better for painting and weathering.

Casting in resin is fast and much easier in some respects but you need to take much more care with the gluing and painting.

Why not try both and see what you like best.

It is suggested that you make all your parts so as soon as you start building you will have everything you need as you want it and it also

Starting with the parts

Our Kits

At the time of these plans we have 15 moulds in our NS range. You do not need all of them to build, however you can always just add a few moulds to your set and extend the possibilities

The moulds and parts

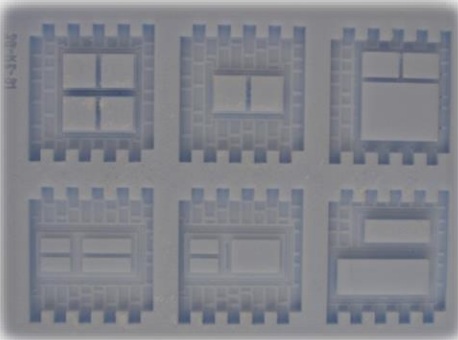
All our products are silicone and can be cast using either Tuffcast plaster or resins, so the parts themselves will be the same however the gluing will be different, for plaster you should use a good PVA (also known as woodwork adhesive) and for resin parts you would use superglue.

For this model we used a wide range of moulds so we could show off as many part variations as possible, however as mentioned you could easily replace many of the windows and tile sections with the ones you prefer. So, for this build we use the following moulds.

Moulds used in the making of this building are:- NS01 / NS05 / NS06 / CM43 Small Slate Roof Sheet / Copping Tiles (Your Choice of Style)

(Note:- you can use whichever roof style you like from our range)

Let's look at the individual moulds before we get started on the build.

| | |
|--|---|
|  | <p>NS01</p> <p>This mould produces doors and windows and we use it on this build in several places</p> <p>KEY MOULD</p> |
|--|---|

gets you to a finished product quicker

Did you know

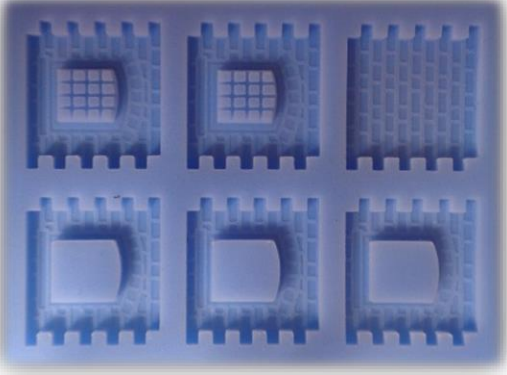
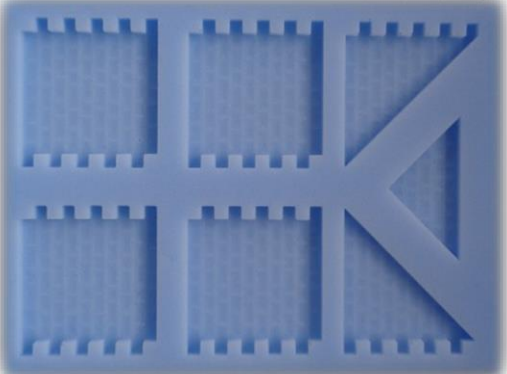
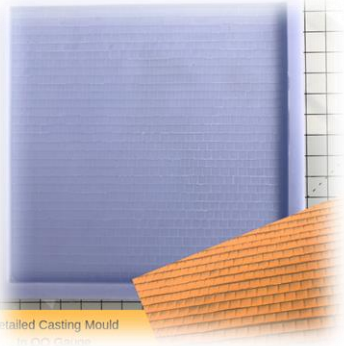
When casting in stone you can spray the moulds with water mixed with a drop of washing up liquid and the casts will look much better as the solution helps the casting mix flow into the mould.

Just get one of those spray bottles, fill with water and add a few ml of washing up liquid, or you can use rinse aid which many people say works even better.

Painting

We recommend you use acrylic paints, so you can mix 50/50 acrylic and water to thin the mix.

For best results create a thin mix and paint the whole building as this will ensure all the

| | |
|--|--|
|  | <p>NS05</p> <p>We use these many times as it provides the main windows of this building</p> <p>KEY MOULD</p> |
|  | <p>NS06</p> <p>We use these many times as it provides the main stone tiles as well as the end gables</p> <p>KEY MOULD</p> |
|  | <p>CM43</p> <p>Small Slate Roof sheet mould</p> <p>Note (You can use any of our roof sheets if you prefer)</p> |
| <p>Note- If you are casting with plaster as shown here then you will use a good PVA Glue but if you are using resin parts then you need to use superglue</p> | |
| | |
| | |
| | |
| | |

cracks are covered as well as cover any glue that may be on the face of the building.

Now you can mix the colour you want and paint the model.

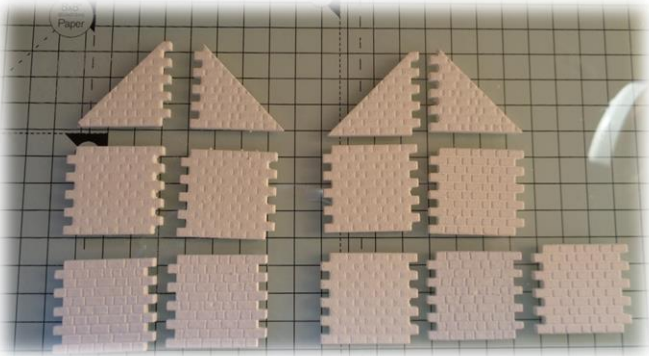
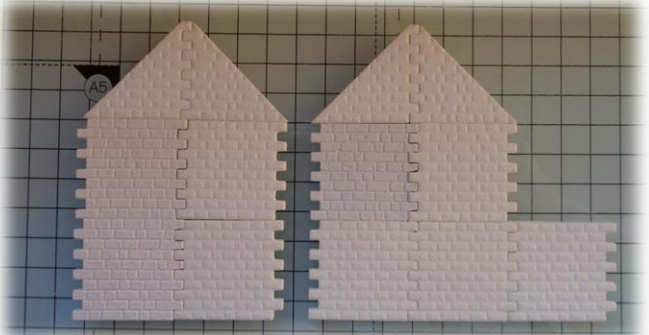
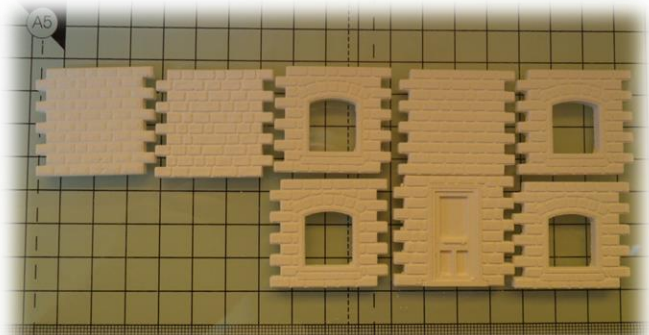
A little practice on a few spare parts is always the best way to test, so you can achieve the desired results.

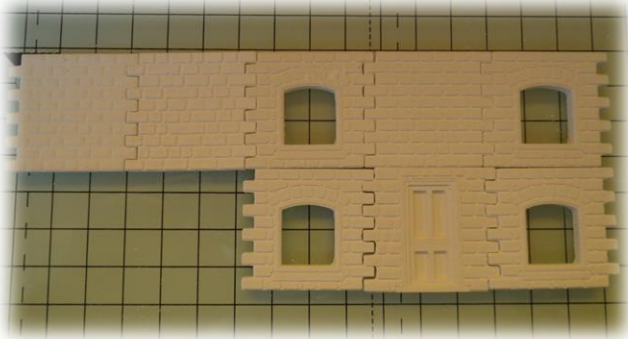
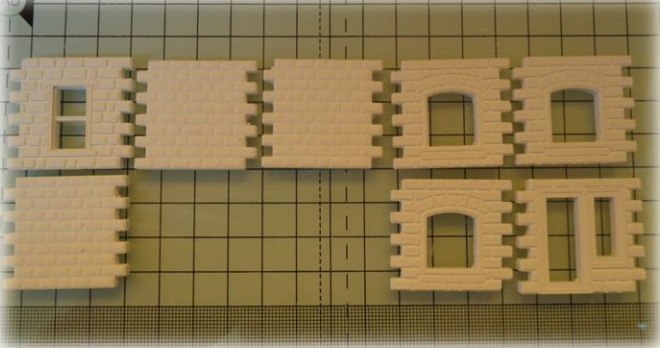
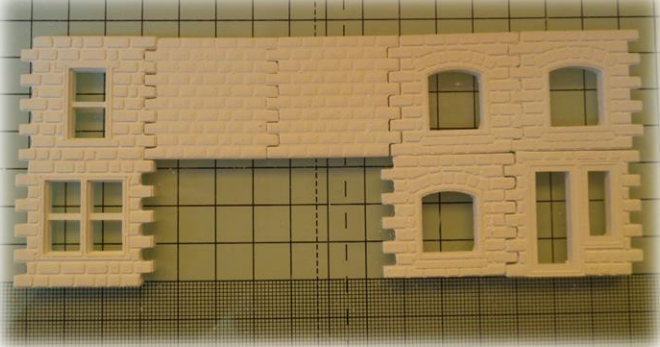
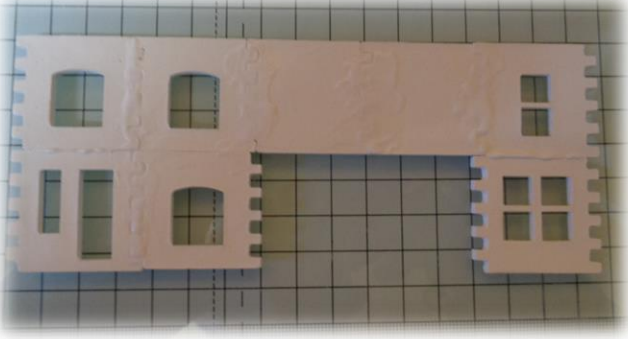
We have several painting workshop articles on our sister website
www.linkaonline.co.uk


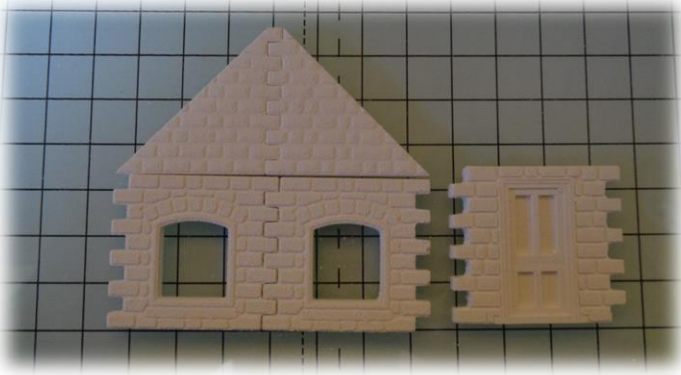

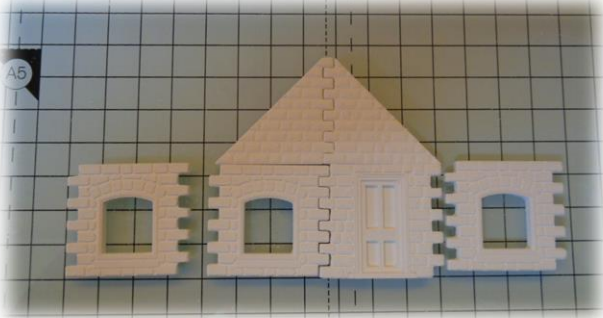
Inside Information

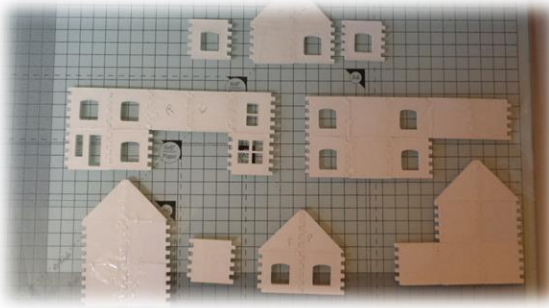
Did you know we have several areas where we post updates, we have several Facebook pages, we are also on twitter and you can subscribe to both our websites to get our newsletters and a host of other information

So now we have seen all the moulds and what they look like we can get on with a few plans and start our building

| | |
|---|--|
| | <p>Firstly you need to cast the 3 moulds needed in the kit four times each. We recommend you watch our videos on our YouTube channel to learn how to pour Tuffcast.</p> |
|  | <p>When the casts are completely dry, building can commence, start by laying the casts out on your work area. These two pictures are of the end walls. It is best to test the cast for fit before gluing.</p> <p>Note- It is a good idea to use a greaseproof paper or cling film on your work surface as it stops any excess glue on the cast sticking to your workbench.</p> |
|  | <p>When gluing the parts, place them face down on the surface as this ensures all the stone is kept perfectly inline, allow to dry and then turn the main parts face up as shown here.</p> <p>Don't worry if you have a few gaps in the fingers or joints as we will deal with them a little later.</p> |
|  | <p>Repeat the procedure for the other walls as shown in the following pictures.</p> |

| | |
|---|--|
|  | <p>Showing the casts as they look when joined together</p> |
|  | <p>Next we will do the other side of the building just as we did before, by laying the parts out.</p> |
|  | <p>So, this is how they look when joined together. Use a ruler along the top edge to keep the top level when gluing together</p> |
|  | <p>It is best to glue the parts together and lay them face down, as the face will all be flat, then you can always add a little more PVA glue on the joints.</p> |

| | |
|---|--|
|  | <p>Now we will lay out the porch section</p> |
|  | <p>This is the porch section of the build. You only need to glue the 2 apex casts and the end 2 casts at this stage, as per the picture.</p> |
|  | <p>Here is the porch for the other side of the building</p> |
|  | <p>So, glue the centre sections together, the sides will be at 45 degrees at the ends when we put the building together a little later.</p> |



You should now have a selection of walls like the picture as shown.

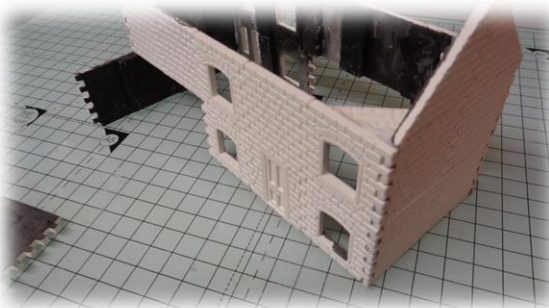


If you intend to add lighting to the building, we advise that you paint the inside black this will help prevent light bleed and is better to do it now as it is very difficult to do when completed.

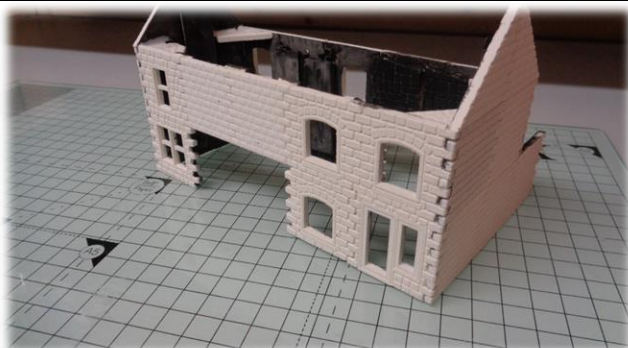
If your not lighting the building you can just skip this step



When the paint is dry (if you have painted the inside) take the front wall and glue to the end wall ensuring they are at 90 degrees .You can see in the picture that we have used Lego bricks, this helps to hold the pieces at 90 degrees.
Repeat with the rear wall and other end.
Leave both sections to dry thoroughly.

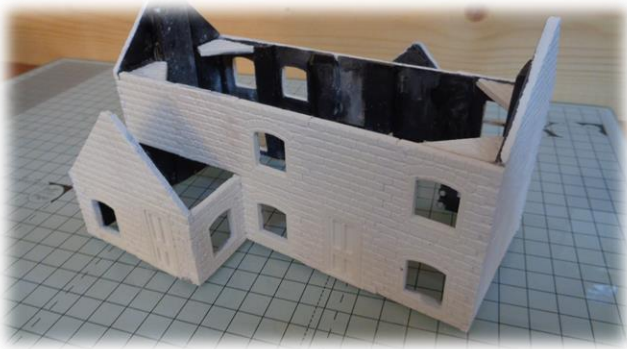


When they are dry, glue the 2 sections together.



The basic shape of the building will now be seen.

This is the front of the building.



Next glue the 2 porches onto the building

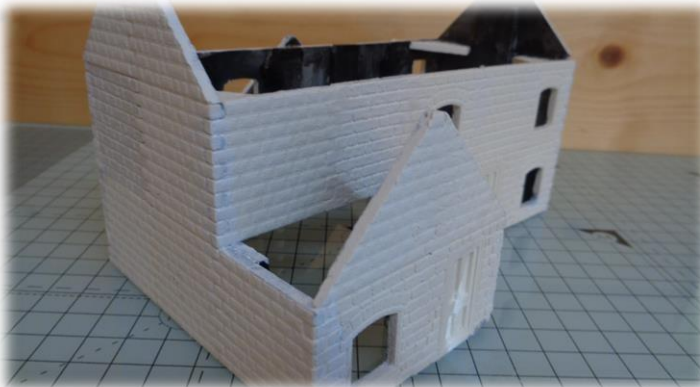
Just glue all the parts here in one go so that everything fits together and then let dry as normal



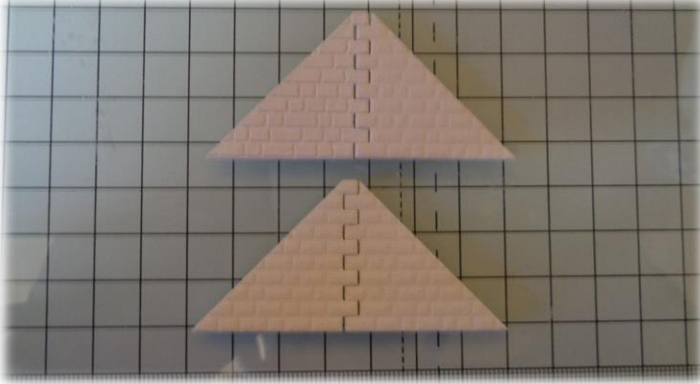
Note that the front porch is more in the centre of the building.



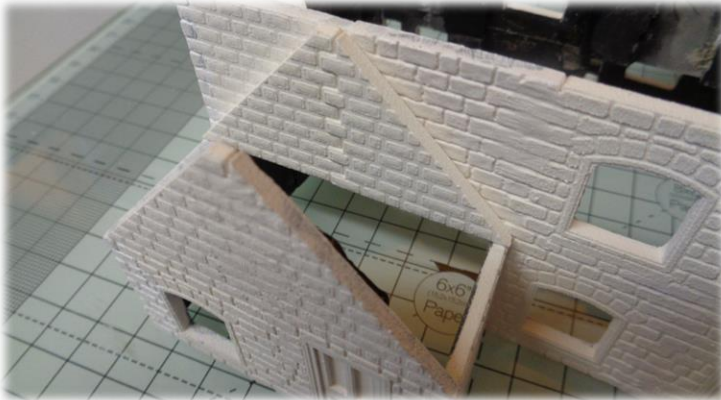
Here is a view of what you have so far.



Another view of the other side of the building



While the porch sections dry, take 4 of the wall apex pieces and glue together as per the picture.

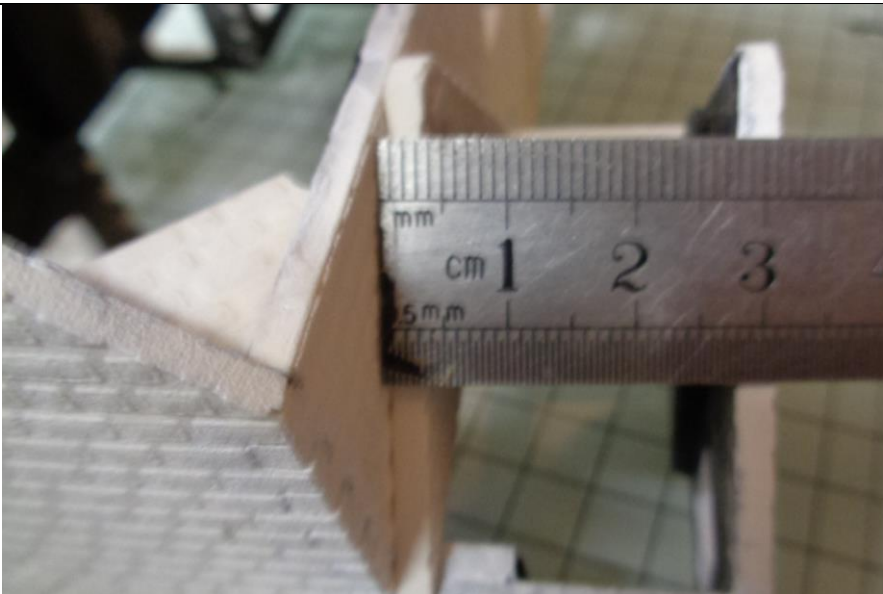


Then glue 1 of these pieces on the inner end of each porch as in the picture.

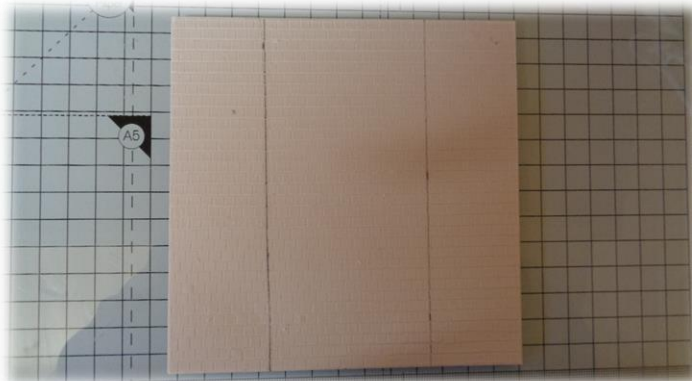
These are to support the inner end of the porch roof.

The next stage is to decide on which roof you would like to use???

In these instructions we have used CM 43 this is a small slate style, 2 of these casts are required.



When all parts have had time to dry, measure the width of the porch roof, then add 3mm to this to allow a decent overhang, we made ours 35mm.



Now mark this width on the sides of your chosen roof style, and carefully cut the strips off.

We use a fine tooth modelling saw.



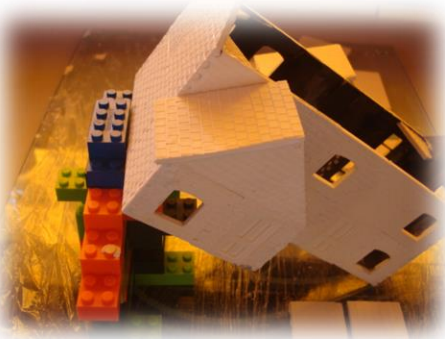
Now take a straight edge and place up one side of the porch roof.



Then with another ruler measure the distance from the straight edge to the edge of the porch, again add 3mm for overhang, ours measured 48mm add 3mm therefore 51mm.


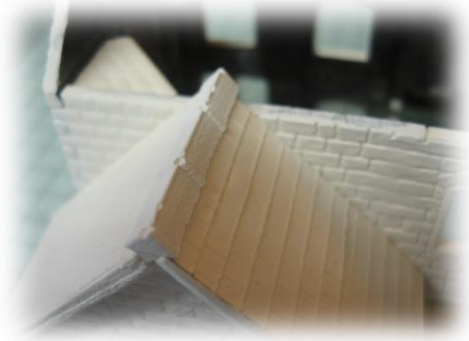
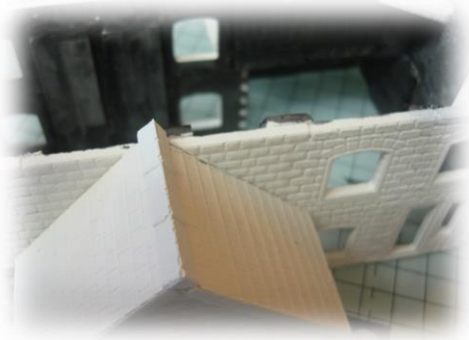
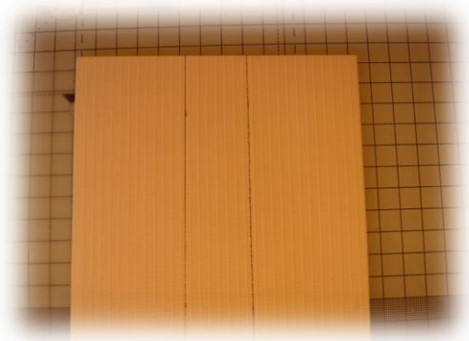


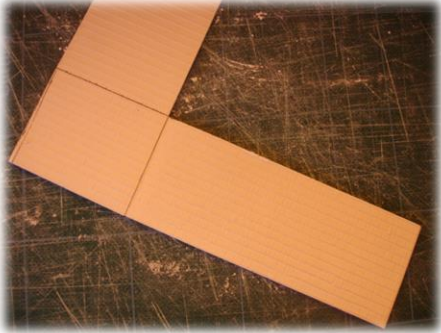
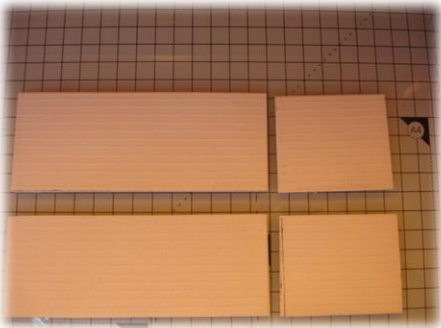
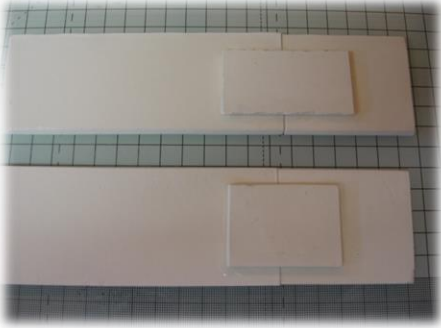
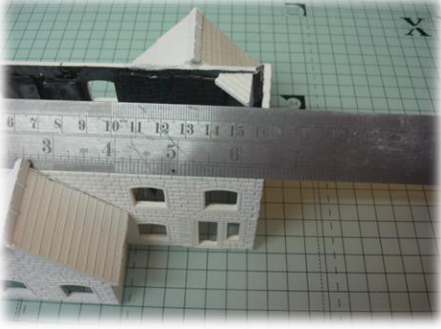

Mark this measurement on the strips of roof previously cut and cut them off. You will need four pieces in total to cover both porch roofs.





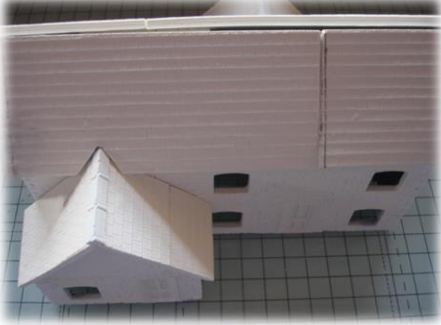
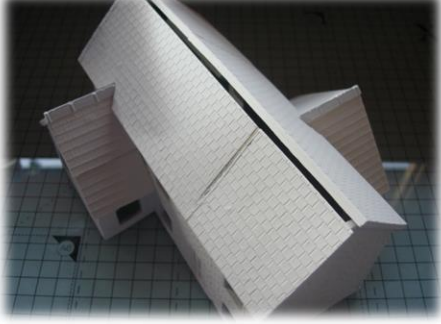
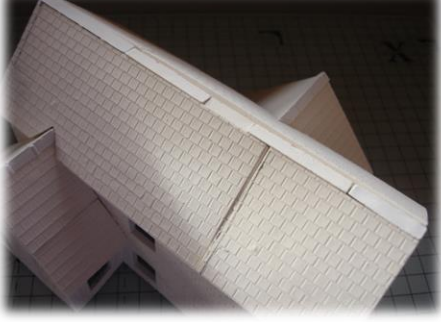
They can now be glued in place. Again using Lego support the building at an angle, this helps stop the roof piece sliding off the walls.

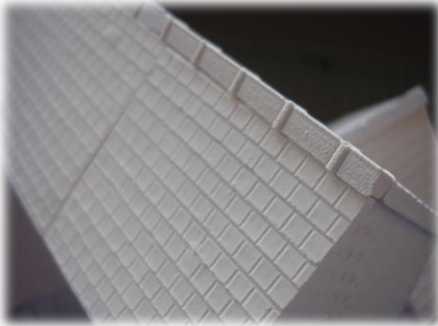
MAKE SURE THE TILES ARE THE CORRECT WAY UP.

| | |
|---|--|
|  | <p>Repeat this procedure for both porches</p> |
|  | <p>When all pieces have been fitted and have dried you need to fit the ridge tiles. We have used mould CM37, you could also use CP02 this would give you chimney stacks as well.</p> <p>Cut to length and glue in place.</p> |
|  | <p>You can if you wish fill the groove between the roofs with Tuffcast, or use the ridge tiles upside down, your choice.</p> |
|  | <p>We now move onto the main roof, take the second roof sheet. Cut 2 strips of the long side 51mm wide, this is the same as the porch roofs as we used the same apex pieces.</p> |

| | |
|---|---|
|  | <p>Now use the remaining piece of roof from sheet 1 lay your cut piece next to the bottom of the spare piece and draw a line the same height as the full piece, do this to both pieces of roof.</p> |
|  | <p>Glue the small pieces to the right hand edge of the larger roof pieces. This will keep the joint away from the porch roof tops.</p> |
|  | <p>Add scrap pieces of the remaining roof sheet on the back across the joint to strengthen the joint.</p> <p>Allow to dry fully before moving on.</p> |
|  | <p>Now measure the full width off the building and as with the porch roofs add 3mm to each end (6mm total).</p> |
|  | <p>Mark this distance on the roof pieces, make sure you measure from the end where the small piece has been fixed. This will make the roof stronger than cutting into the smaller piece.</p> |

| | |
|---|---|
|  | <p>Now place a roof piece on the building, (Don` t forget to allow 3mm overhang each end) Carefully mark the position of the porch ridge tiles</p> |
|  | <p>Carefully cut a "V" shape where you made the mark.</p> |
|  | <p>Slowly file to fit on the porch roof.</p> |
|  | <p>Until a good fit is attained. Any small gaps can be filled with Tuffcast later.</p> |
|  | <p>Now using Lego again prop the building up at an angle and glue the roof piece in place.</p> |

| | |
|---|--|
|  | |
|  | <p>Now repeat this process with the other roof piece.</p> |
|  | |
|  | <p>Next we come to the main roof ridge tiles.</p> |
|  | <p>If you like you can glue some ridge pieces upside down to fill the gap.</p> |



Now glue more ridge tile pieces on top making them flush with the end of the roof.



When all parts are dry, take a small pot with some mixed Tuffcast and fill any gaps you may have in your build. This is done using a fine paintbrush and very watery Tuffcast, any excess can be brushed away when dry.



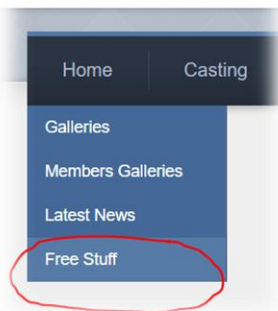
The next job is painting, this is completely your choice and design.

We suggest you would want to apply a wash coat over the whole building, just mix up some Acrylic pain and this down using 50% water, mix thoroughly and then paint the whole building.





If you bought the chimney mould CP02 then your building could look something like this.....



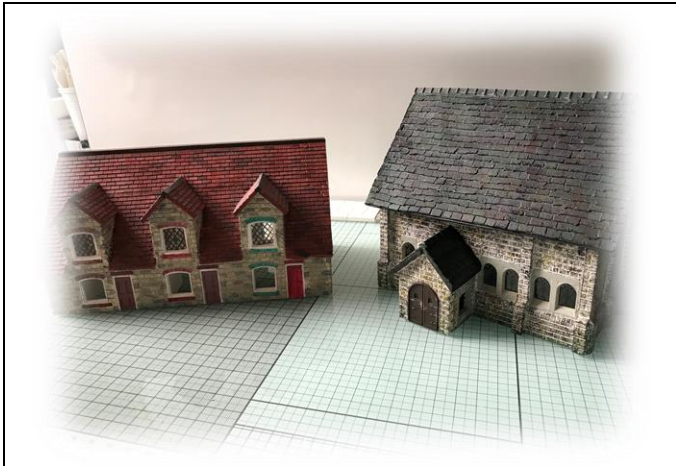
All our building plans are FREE.

If you want more building plans, they are free to download on our website
www.scalecast.co.uk

Inspiration

The great thing is that you can make many variations as well as add several of our other mould products to extend on your ideas.

www.scalecast.co.uk



Adding to your collection of our NS range you can build literally hundreds of different buildings and the great thing is our moulds will last for many years.

Here is another stone building that shows off our Victorian slate roof. So, by adding our NS01 windows mould you could make something like this.



Low Relief Stone Building



Terrace Houses



Village Shops



Water Wheel

We have fully extended our NS stone range of moulds so now you can build many more exciting realistic stone buildings. All you need is lots of casts and some imagination www.scalecast.co.uk.

All our stone buildings moulds are in one place so you can find them easily

<https://www.scalecast.co.uk/store/c31/Stone.html>

Happy Building