

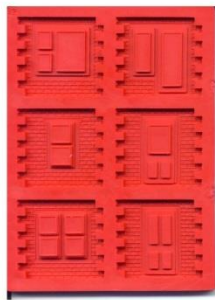
Railway Terrace



This building can be made as a single unit or made in multiples to make a street.
The roof will have to be altered slightly if a street is required.



Cast B1
6 Times



Cast B2
12 Times



Cast B4
8 Times



Cast B5
12 Times



Cast R1
10 Times



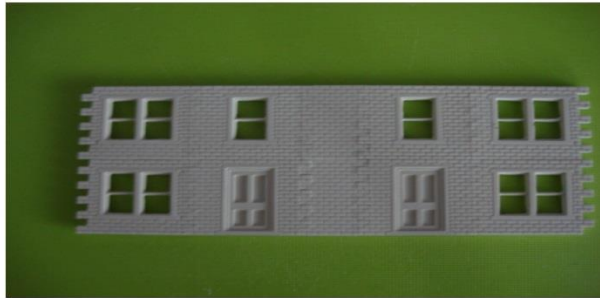
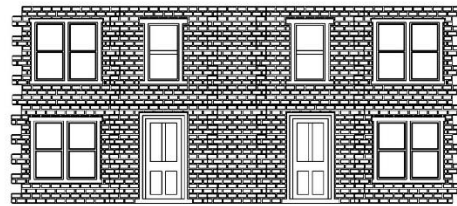
Cast B6
4 Times



Ridge Tiles 1 pack

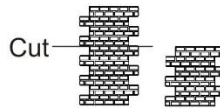
For the front wall.....

Glue these casts together to makeThe Front Wall.



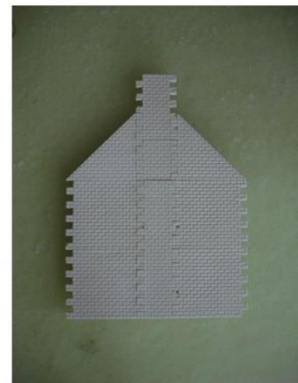
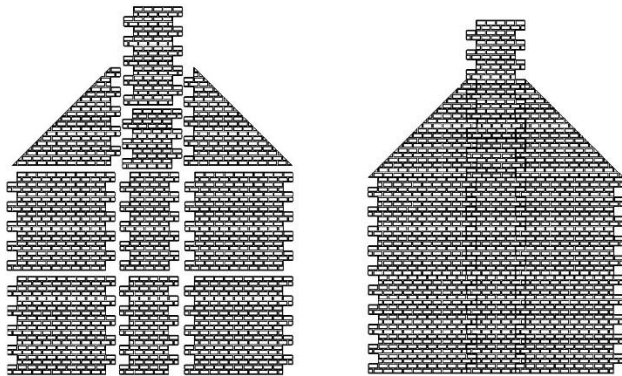
The End Walls.....

Take a cast No B5-140 and cut where shown



To make 2 small pieces

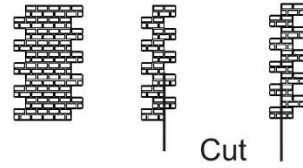
Add 1 of the small pieces to these casts.....To make an end wall



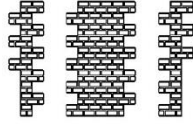
Repeat the process to make the other end wall.

Chimney Stacks

Take 1 cast B5-140 and 2x B6-08 and cut the bottom two fingers off where shown



To Make.....

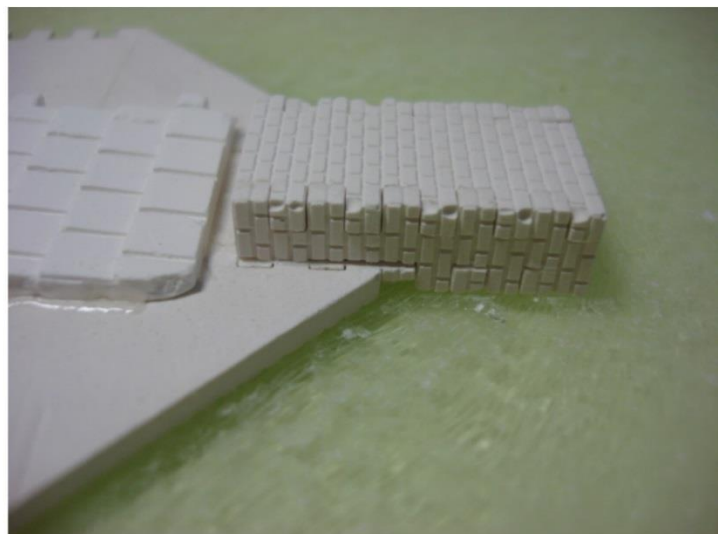


Then glue together as per the drawing so that cut edges are facing outwards.

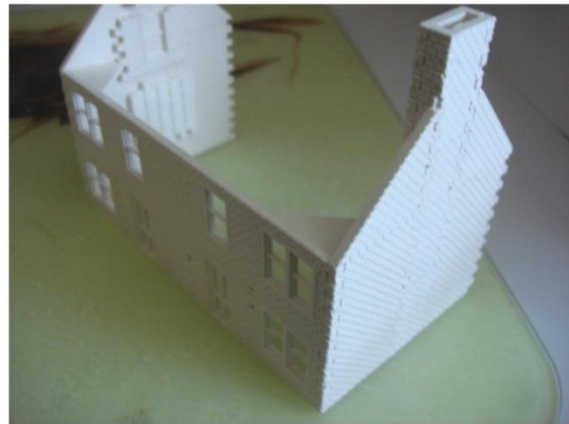
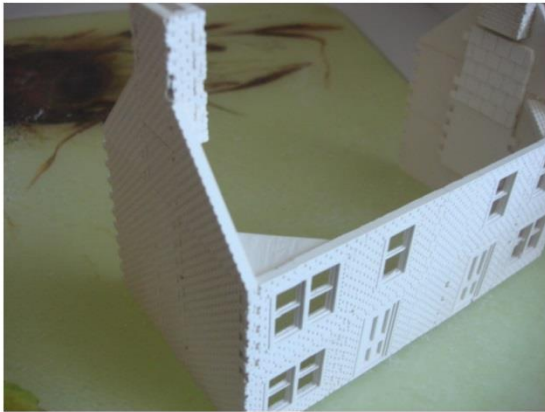
This needs to be done 3 times to produce all the chimney stacks.



When the chimney stacks are dry,
Glue two of them to the end walls.
Keep the third one for the rear wall.
The odd pieces in the picture are
only to add strength to the wall.



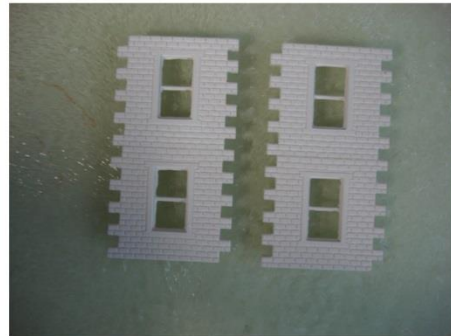
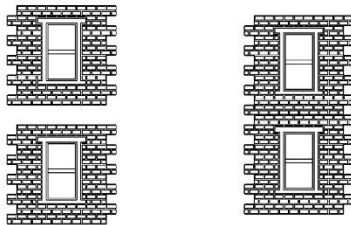
Glue both the end walls to the front when the chimney stacks are dry.



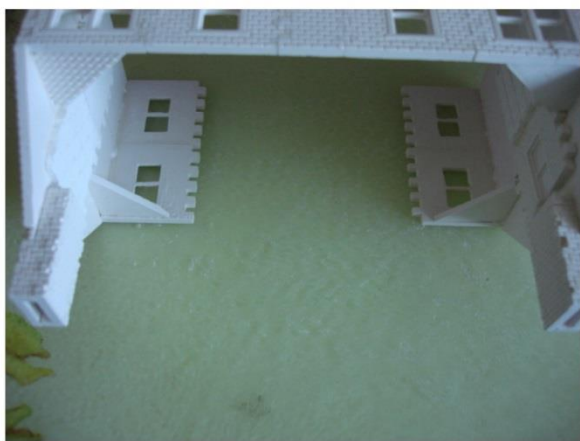
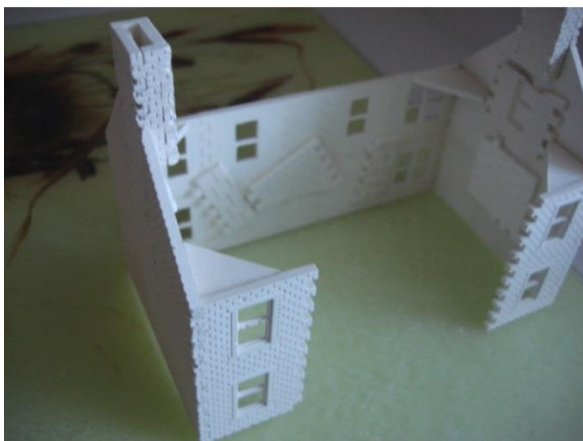
The Inner rear Walls.

Use these casts..... To make these walls.

2 Required.



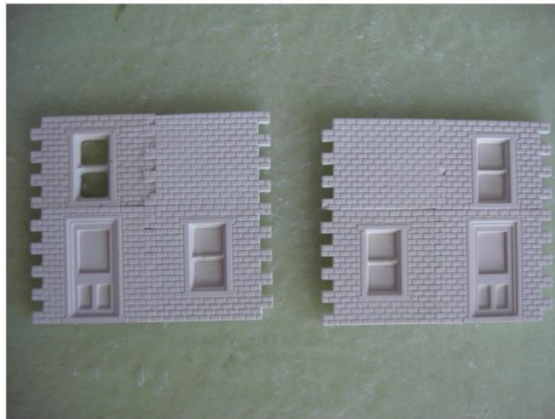
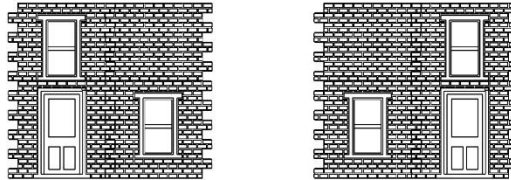
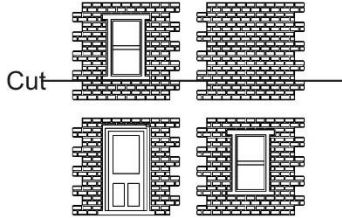
Glue the inner rear walls to the end walls and add corner braces, if they are glued on with the building laying on it's back the inner rear walls should be square to the ends.



Back Door Walls

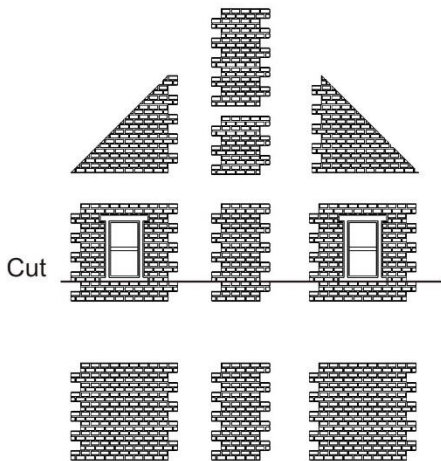
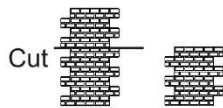
These casts are needed twice.
The top 2
Cut at the line

To make the back door walls
NOTE. The walls have to be
left and right handed.

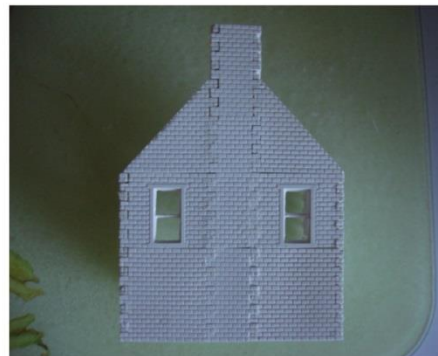
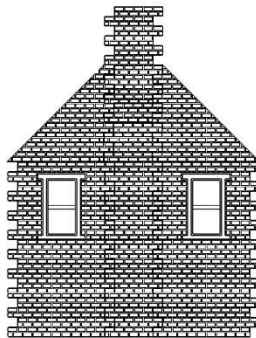


Rear Wall

These casts are needed
Cut at the line.



Make the rear wall

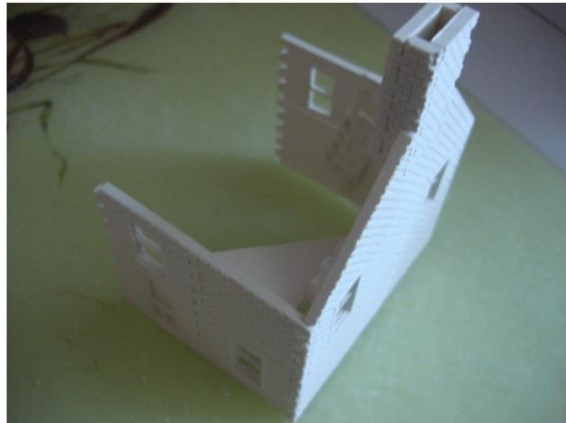
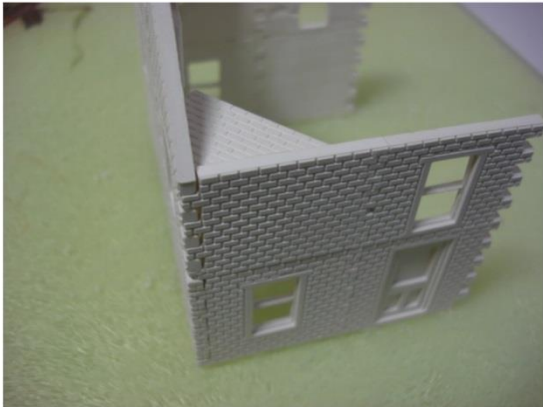


When dry add the third chimney stack made earlier.

Designed by Jeff Howe

July 2014

When the rear wall and the back door walls are dry glue them together adding corner braces to provide extra strength.



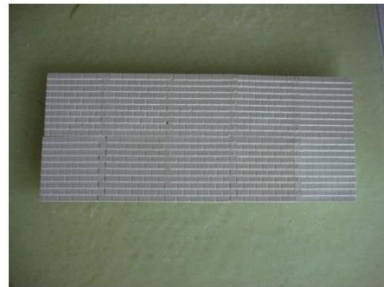
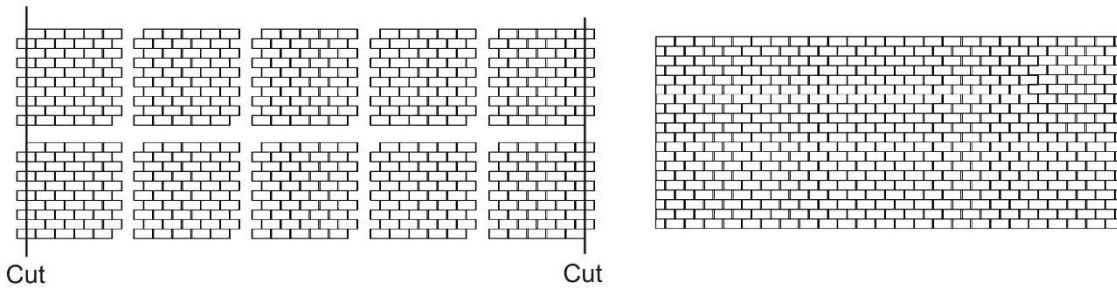
When dry glue this section to the main building.



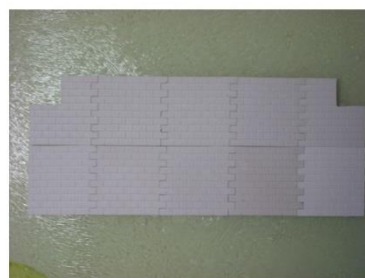
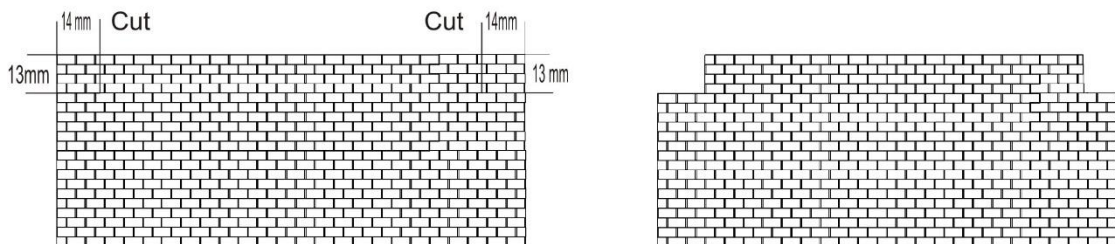
Be very careful with the model at this stage as it will be very fragile!

Roof sections.

Take 10 of cast R1-15, cut the fingers off the end 4 as shown and then glue together.



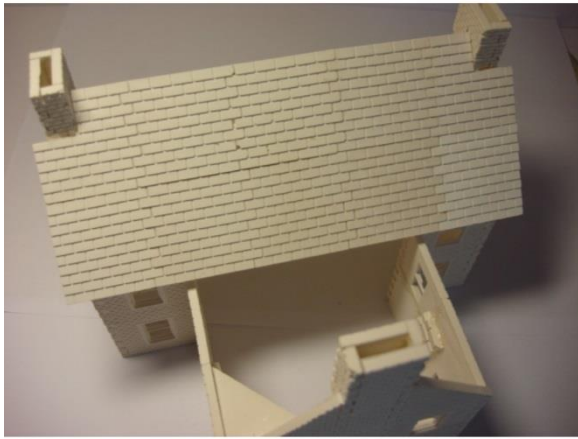
When dry carefully cut two pieces out off the top corners of the roof to allow for the chimney stacks. Approximately 14mm in and 13 mm down but check the measurements with your building.



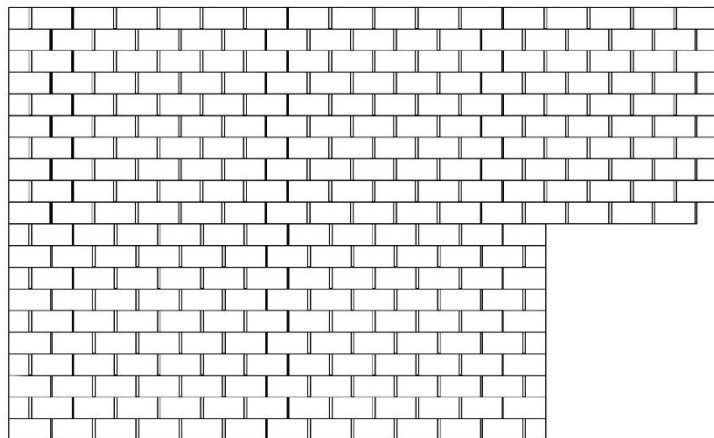
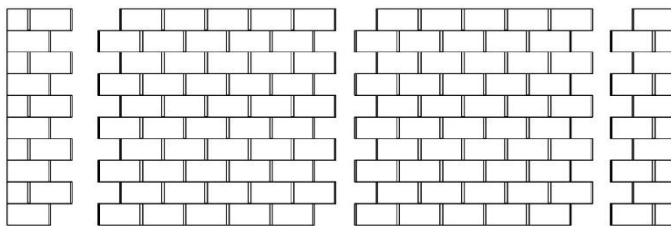
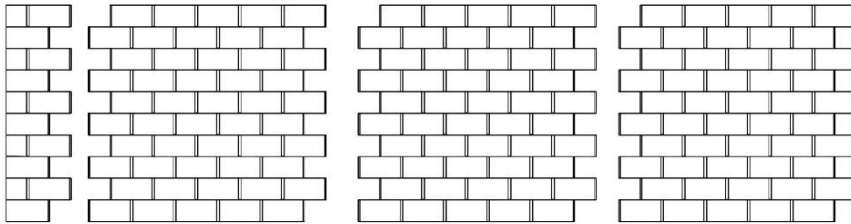
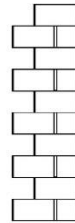
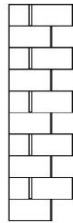
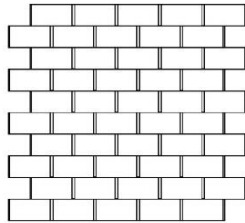
Two of these will be needed to complete the main roof section.

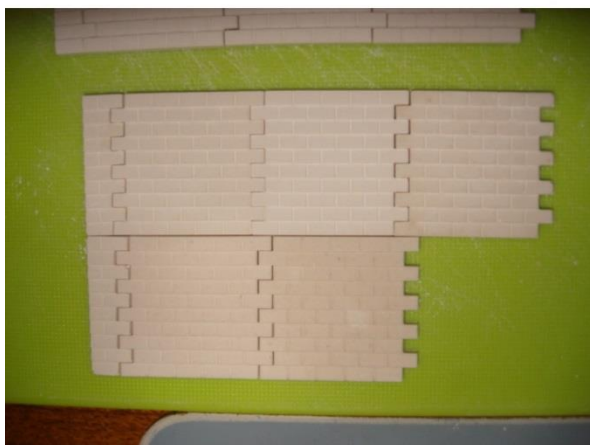
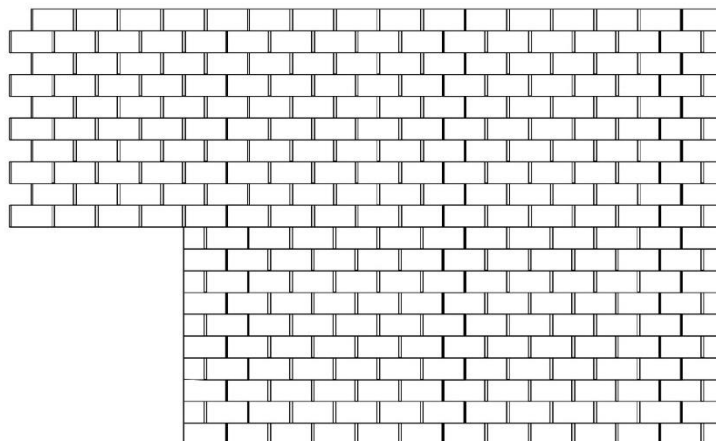
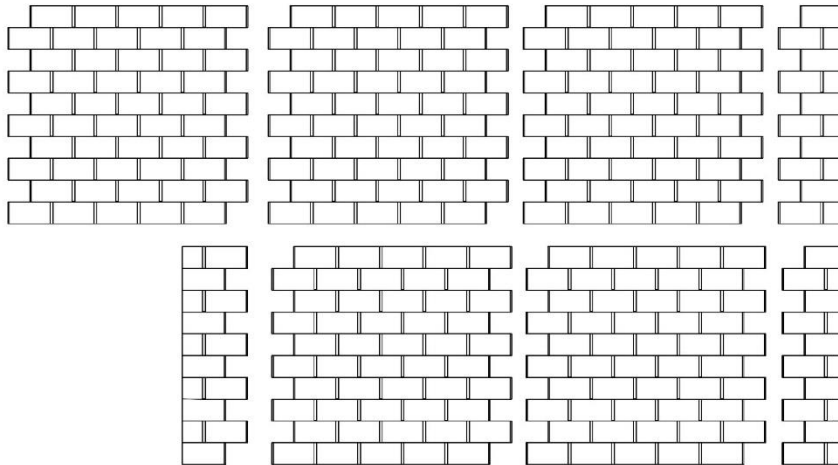
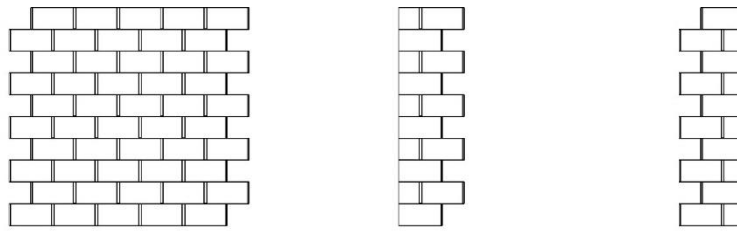
If you are building a Terrace or street of these buildings, the roof pieces will have to be cut shorter and not overhang the end walls to allow a close fit when placed next to another building.

When Dry glue both roof sections in place.

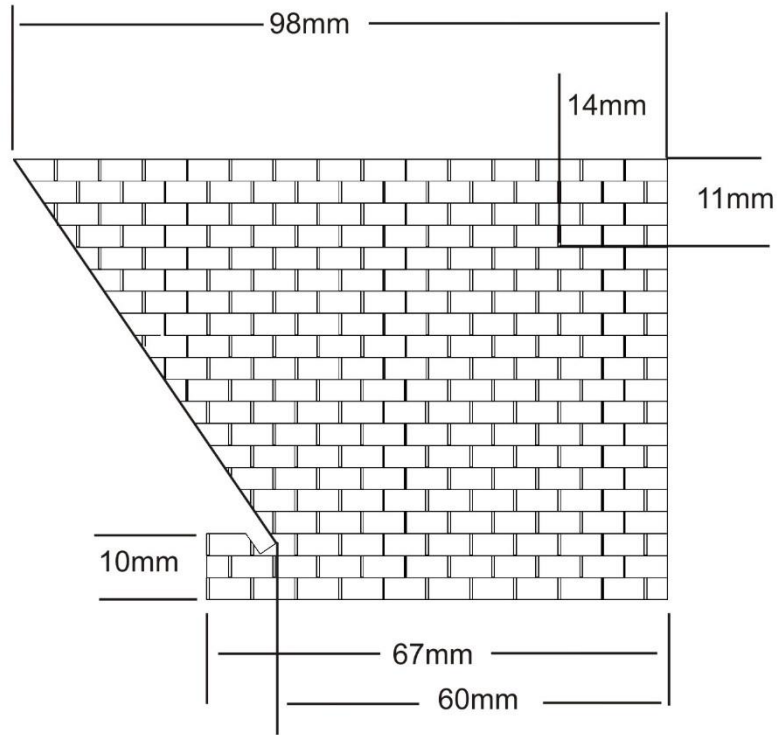


Take 10 casts R1-15 and 3 casts R1-14L, and 3 casts R1-14R to make 2 rear roof pieces.

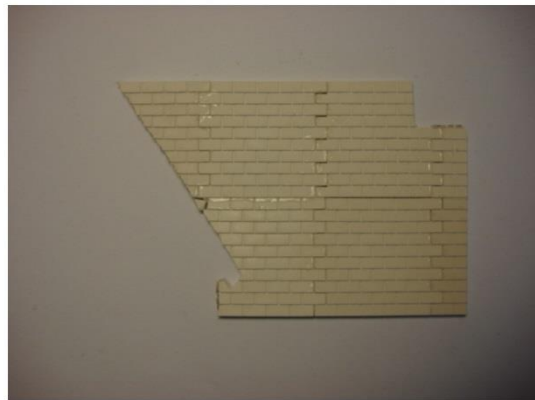
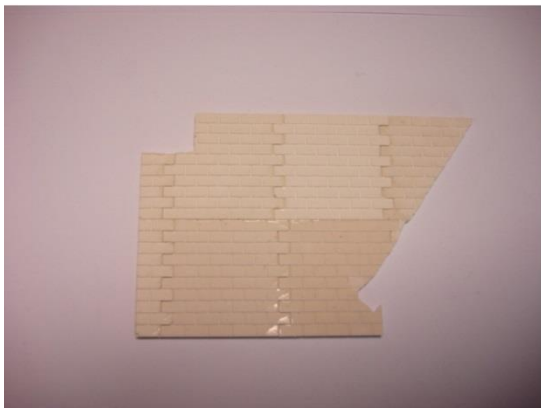




When dry both roof pieces have to be cut as per the diagram
(All measurements are approx check your model before cutting)

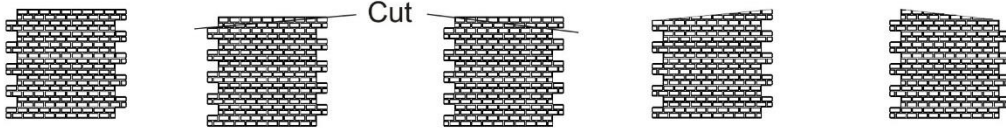


Repeat in reverse for the other side.

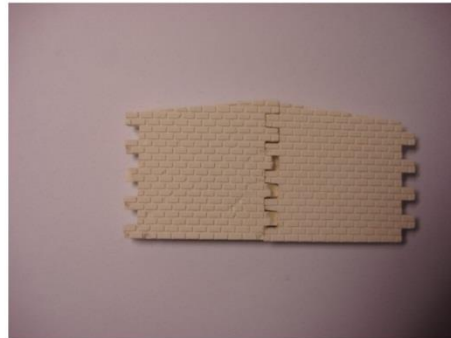


Designed by Jeff Howe

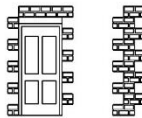
For the outbuilding you will need 4 x B1-01 casts, you can use 2nd grade casts for this as they will not be seen on the finished model.
Cut 2 of each as shown in the diagram.



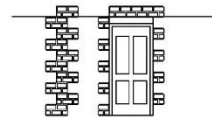
Then glue 2 pairs together as per the picture.



Take 2 casts B4-158 and 2 casts B6-08

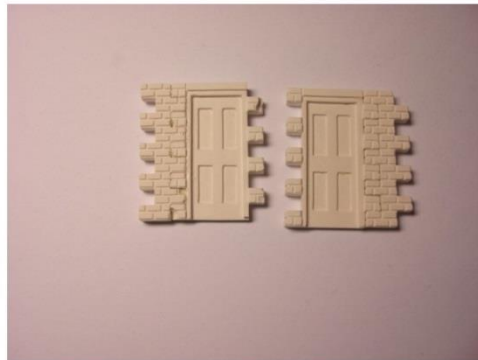
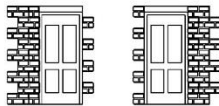


Cut as shown.

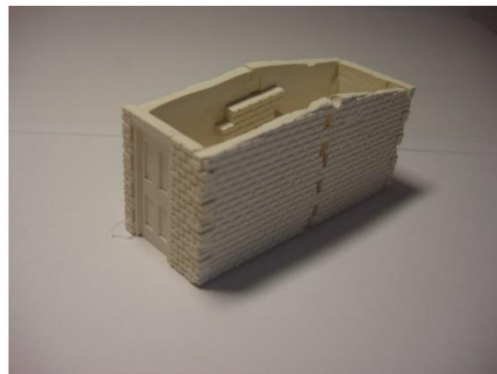


Cut

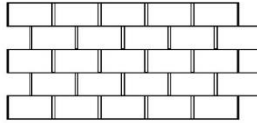
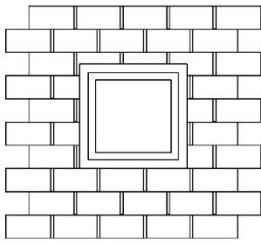
Glue together to make 2 walls



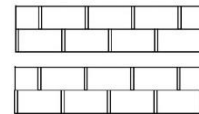
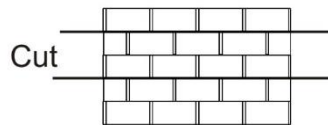
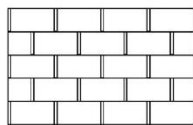
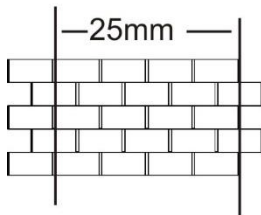
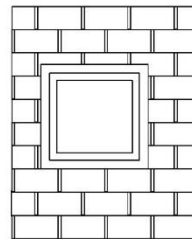
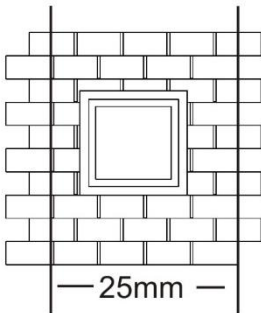
When all pieces are dry glue together to make the outhouse.



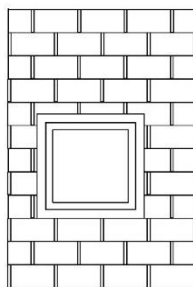
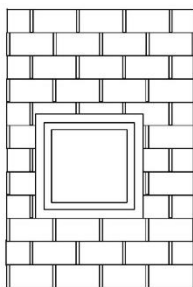
Take 2 casts B4-164 and 1 cast R1-15A



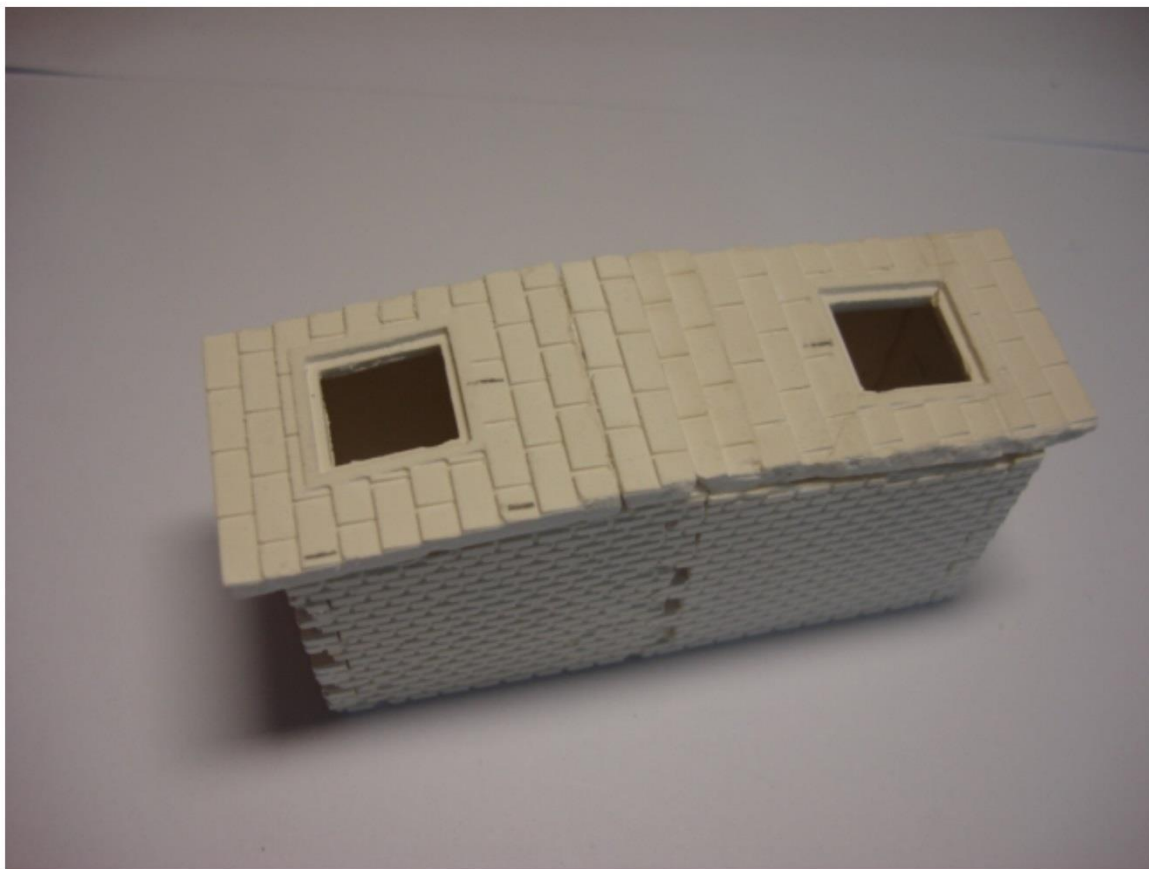
Cut the casts where shown



Now glue the small pieces cut from cast R1-15a to the top of both cast B4-164



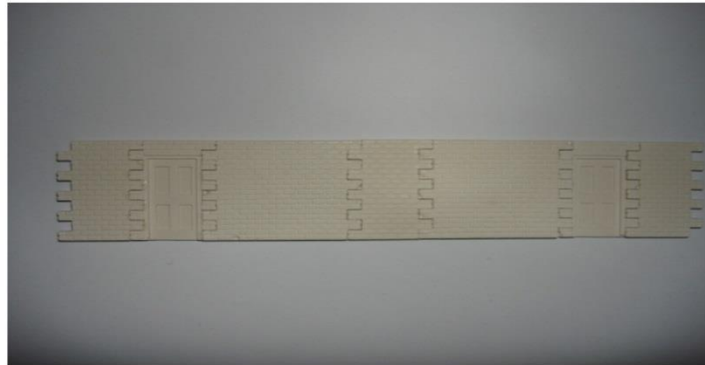
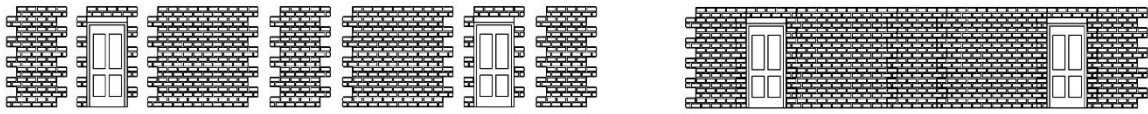
When dry glue these roof sections to the outhouse



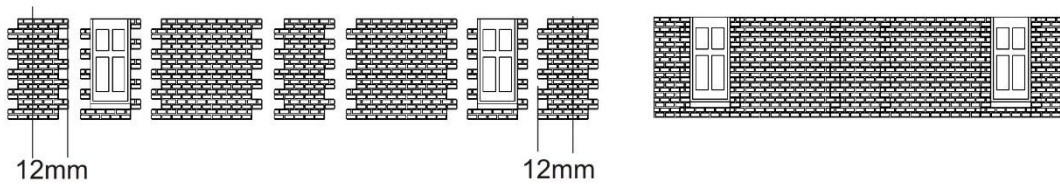
When the outhouse is dry glue exactly in the centre of the rear wall of the House.



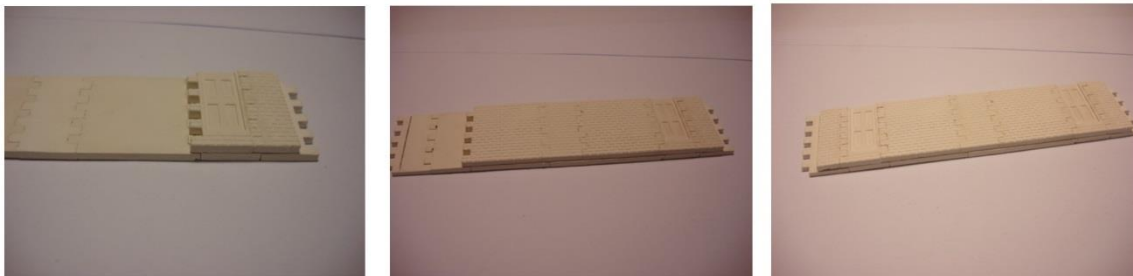
Next is to build the walls of the back yard, this is double skinned so that the brick pattern and the doors can be seen from both sides.
 Using casts B1-01 x 2, B5-140 x 3 and B4-158 x 2 build the outside skin of the back wall.



Using the same casts make the inner skin. The end casts have to be cut where shown, to allow for the side walls to fit.

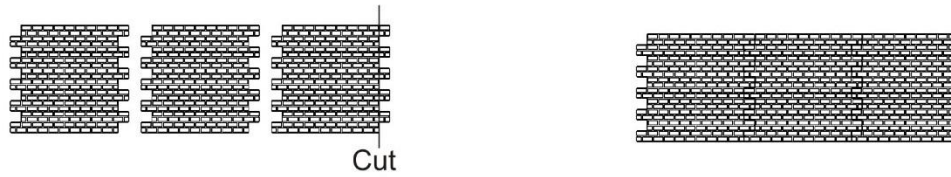


When gluing the inner casts to the outer skin ENSURE that the doors are exactly lined up so that they make a mirror image when viewed from both sides.

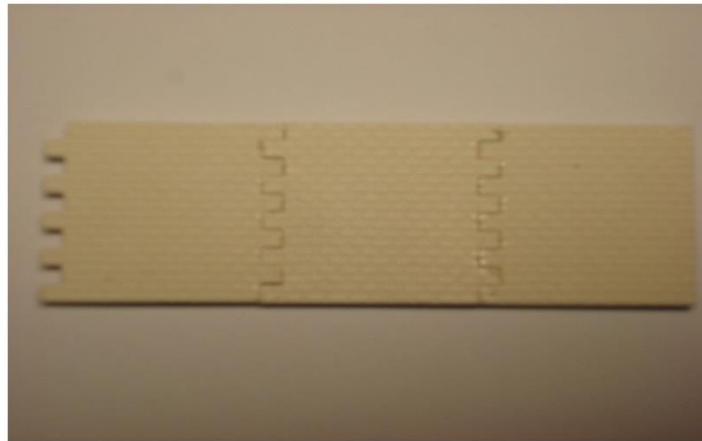


To make the side walls we need 12 casts B1-01

Take 3 casts and cut the fingers off 1 where shown. Glue them together. This will make an outer side wall skin.

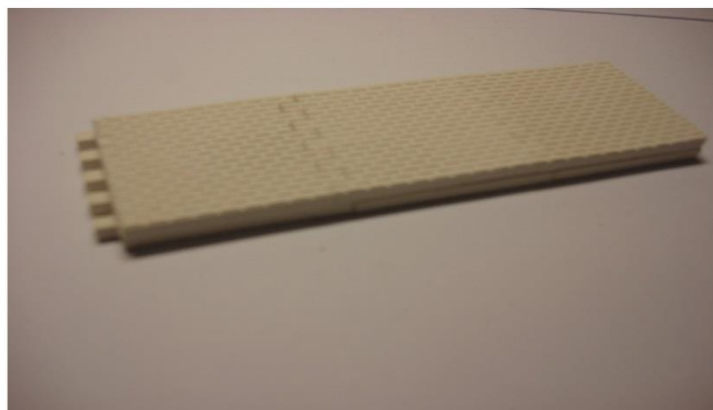
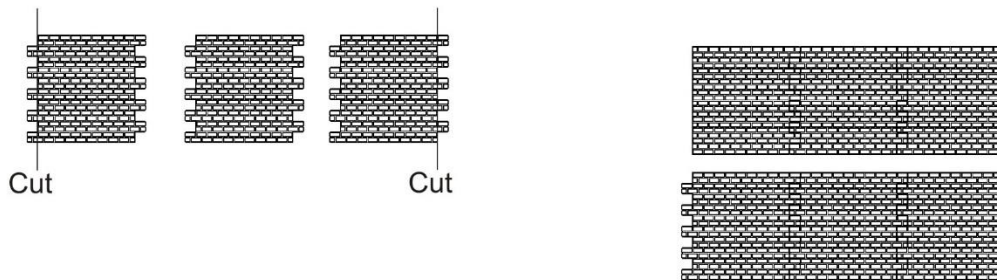


Make 2 of these walls.



Now take the other 6 casts and cut the fingers off 4 where shown. Glue these casts to the outer skins so that one of the fingerless ends are flush.

The other end will be stepped to allow to fit to the rear wall.



When all walls are dry glue the back wall to the rear of the outhouse.



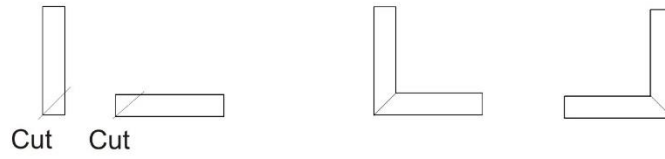
Then glue the 2 side walls to the rear wall and the side of the main house, MAKE SURE THE SIDE WALL IS FLUSH WITH THE HOUSE WALL.



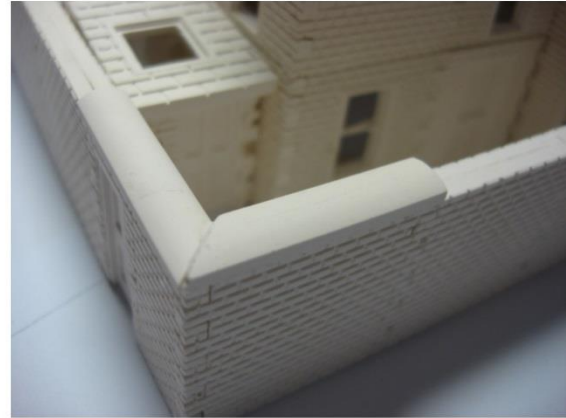
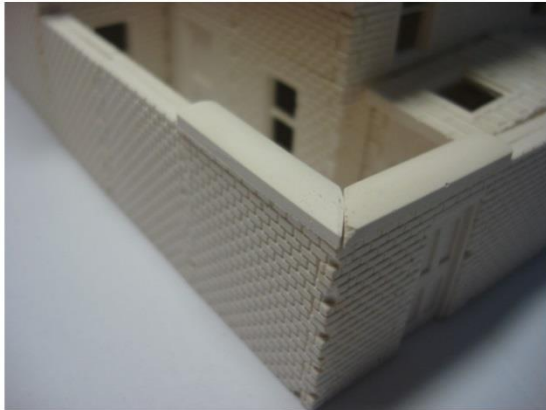
Designed by Jeff Howe

July 2014

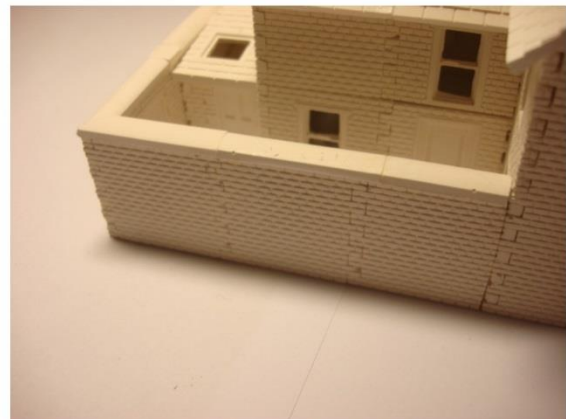
When the walls are set take 10 of cast B5-138 these are the curved top wall copings stones. Take 4 of these and carefully cut a 45 degree angle on the ends so that they make a corner.



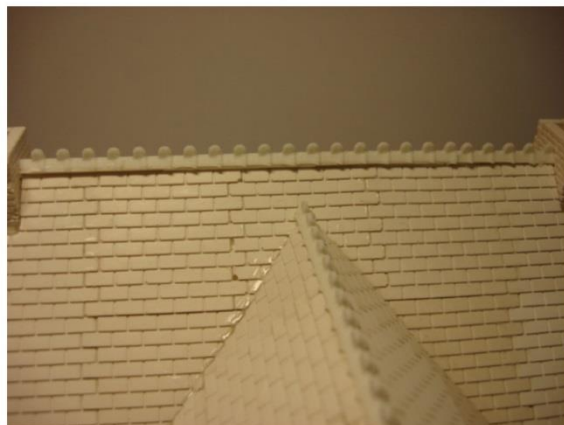
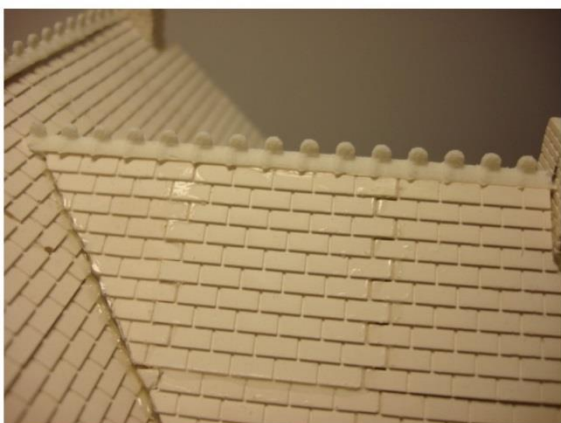
Then carefully glue on top of the rear walls at the corners.



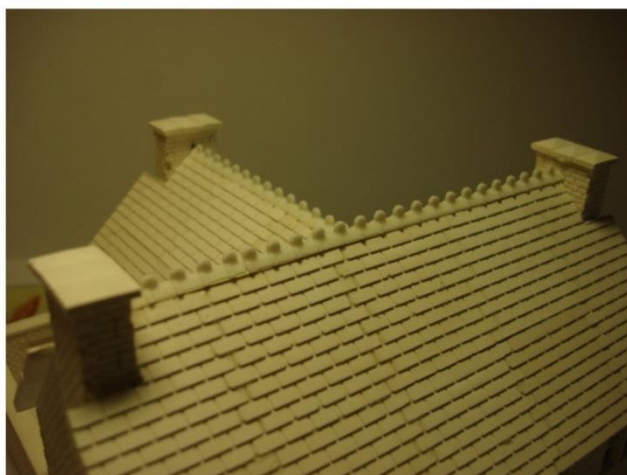
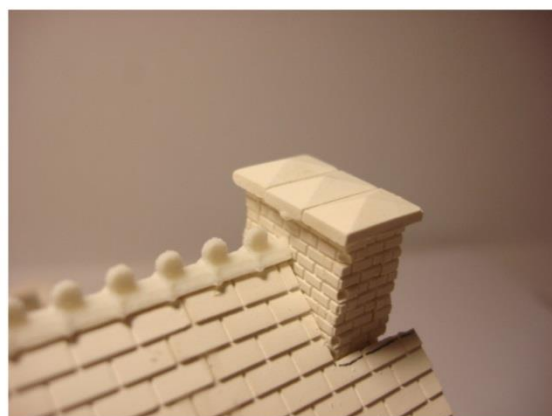
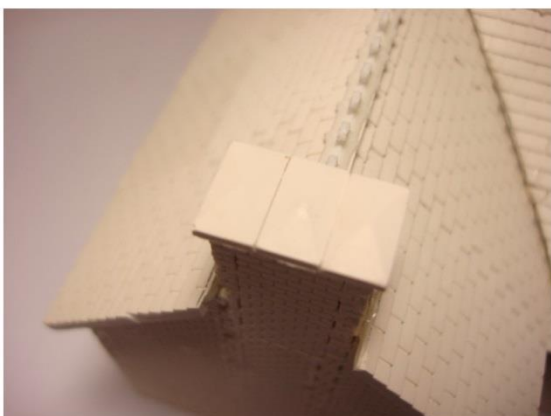
Add the rest when dry.



The roof coping tiles can now be glued to the tops of the roofs.



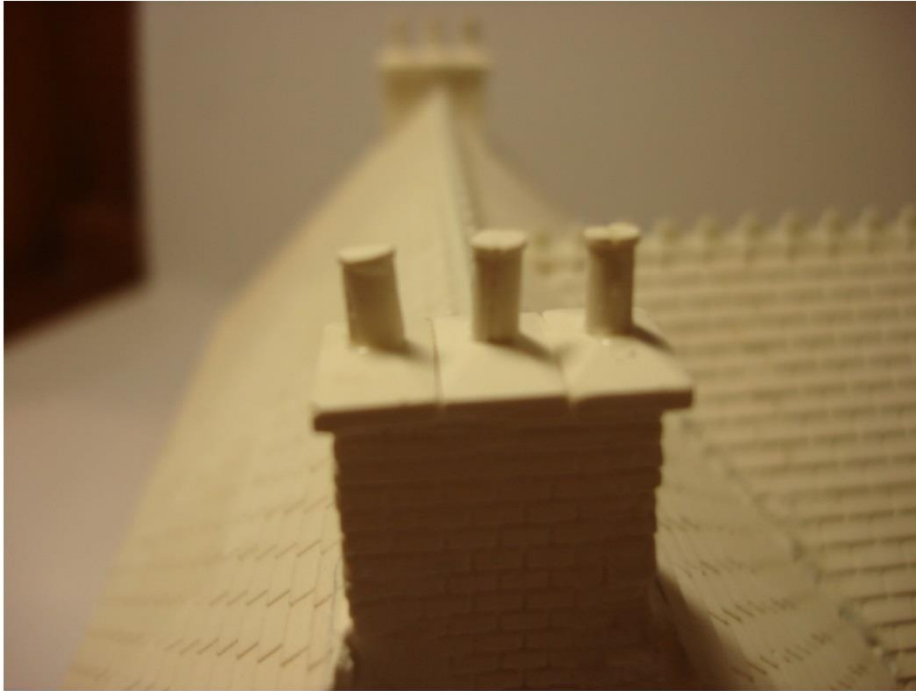
Next take 9 casts B5-126, and glue 3 on top of each chimney stack. Ensure they are central and overhanging evenly on all sides.



Designed by Jeff Howe

July 2014

When they are dry carefully files the points on the 6 on the main house and the 2 outside ones on the rear stack slightly so that the chimney pots will sit.
Take 16 casts R1-13 and only using the chimney pots make 8 pots.
When dry, glue to the points on the stacks.



The building is now complete and ready for painting. To your colour scheme
Also add window acetate, gutters and downpipes etc.



Plans by Jeffrey Howe ©

We hope you enjoyed making the model and of course you can put all your own finishing touches to complete your model. The best thing is that you can change the design to suit yourself and put your own imagination into whatever you build.

There are many more building plans on the website www.linkaonline.co.uk and we are introducing many new products to give you even more different elements to create your very own models, Scenes and a host of products to add those finishing touches.

Also remember that you can add to your moulds collection to give you even more scope in your creations.

Finally there are many step by step guides, painting articles, videos on casting as well as the online forums to help you with anything you need and you are always welcome to contact us on the website if you need anything at all.